

# RAMPAGE

FALL 2025 | VOLUME 43 NUMBER 1



Rockford Public Schools

Quality Community – Quality Schools  
Together Building a Tradition of Excellence



## INSIDE

School Closing Information.....	4
Free/Reduced-Price Meals .....	5
Transportation Information .....	7
Financial Aid Night .....	11
Pesticide Advisory .....	11
Preschool / Child Care.....	12-13
School Year Calendar .....	14
New Student Enrollment .....	16

## A MESSAGE FROM DR. MATTHEWS

Starting school in 6th grade was a complicated experience for me.



Dr. Steve Matthews

At the end of 5th grade I felt on top of the world. In 5th grade I had been on the student council, MC of the school talent show, fastest kid at the school track meet, and always either captain or first choice when picking teams at lunch recess.

When I returned to school in 6th grade, I was wearing a brace on one leg and a shoe with a three-inch lift on the other. The goal was to keep all of the weight off of my right leg because I had been diagnosed with Legg-Perthes disease over the summer. Legg-Perthes is a childhood condition that occurs when blood supply to the ball part of the hip joint is temporarily interrupted and the bone begins to die. I would end up wearing that leg brace for 21 months.

As the school year began, I wondered what my experience would be like. How would school be different?

Some of what my school experience had been did change. I was no longer the fastest kid in school. No longer the team captain or the first pick. No longer in the middle of things, at times feeling on the outside looking in.

But, much of my school experience did not change. I still had teachers who cared deeply about me. I still had friends who tried to include me. I still found learning, especially reading, to be deeply satisfying.

Continues on page 2



Follow our podcast!

Listen to us on your favorite podcast app!



VISIT THE ROCKFORD PUBLIC SCHOOLS WEBSITE AT [WWW.ROCKFORDSCHOOLS.ORG](http://WWW.ROCKFORDSCHOOLS.ORG)

The Rampage is published 5 times annually by Rockford Public Schools

Continued from page 1

School starts in Rockford on August 25. Each school year our students return not knowing exactly what the year will be like. Some students return having faced significant change over the summer. Others return expecting things to be very similar to what they left last year.

Regardless of the circumstance that students are in, what they will find when they return to our schools is a group of people who understand that our job is to make sure they feel like they belong. From bus drivers, to food service workers, to coaches, to the people in the office, to the teachers in the classroom, to the principals – everyone in our district understands our responsibility to welcome each student and to help each student feel like they have people in their corner.

In our district, our commitment is to connect with every student in our schools. Our goal is to ensure that every student believes that they have someone in our system who knows their name, understands their circumstance, and is committed to ensuring that each student feels like they belong in our system. It is a responsibility we take seriously.

I look forward to having the halls of our schools filled once again with students and staff. I also look forward to watching our staff find ways to connect with students and help every student know and understand that someone inside that school wants them to excel, have fun, and look forward to school every day.

I have confidence that it can happen because it happened for me.

Dr. Steve Matthews,  
Superintendent





## TEAM SCHEDULES

All schedules can be found at [rockfordrams.org](http://rockfordrams.org). Navigate the Fall, Winter and Spring sports tabs to find a specific schedule or click on the “Master Schedule” tab to view all upcoming events.

## ALL-SPORTS PASSES

All-Sports passes and single-game tickets will be sold digitally this year. Head to [rockfordrams.org](http://rockfordrams.org) and click the “Tickets” link to purchase.

**All admissions are \$5.00 (K-Adult)**

**Family Pass \$225**  
Allows up to 7 family members. Any additional spectators will need to purchase individual ticket.

**Adult Pass \$85**  
**Student Pass \$25**

All-Sports passes are good for HOME events only.  
Excludes ice hockey, regular season tournaments/invites, and MHSAA tournaments.

---

## ATHLETE REGISTRATION

All student athletes must have a valid physical (dated April 15, 2025 or later) on file and have athletic registration completed via “Aktivate” in order to compete. To complete registration, go to [rockfordrams.org](http://rockfordrams.org).

For additional help/instruction: [rockfordrams.org](http://rockfordrams.org)



The mission of the Rockford Public Schools District is to provide the teaching and learning environments which will ensure, with the support of the students, parents and community, that all students, upon graduation, will have the academic and social skills and strategies to be successful, lifelong learners.

# ROCKFORD PUBLIC SCHOOLS

## ROCKFORD BOARD OF EDUCATION

<b>President</b> .....	Jarrold Folsom
<b>Vice President</b> .....	Kelley Freridge
<b>Secretary</b> .....	Christie Ramsey
<b>Treasurer</b> .....	Jake Himmelspach

## ADMINISTRATION

<b>Dr. Steve Matthews</b> .....	616.863.6557
Superintendent of Schools	
<b>Mike Ramm</b> .....	616.863.6556
Assistant Superintendent of Instruction	
<b>Dr. Korie Wilson-Crawford</b> .....	616.863.6554
Assistant Superintendent of Human Resources	
<b>Allison Clements</b> .....	616.863.6555
Assistant Superintendent of Business and Operations	
<b>Lisa Jacobs</b> .....	616.863.6322
Executive Director of Community Services	
<b>Scott Beckman</b> .....	616.863.6320
Executive Director of Safety and Security	

## SUPPORT SERVICES

<b>District Literacy</b> .....	616.863.6556
Sharon Wells, Director	
<b>Facilities and Operations (Maintenance)</b> .....	616.863.6330
Shawn Hayward, Director	
<b>Finance</b> .....	616.863.6555
Kayla Garza, District Controller	
<b>Food Service</b> .....	616.863.6037
John Henry, Director	
Jodie Fish, Assistant Director	
<b>Information Services (Technology)</b> .....	616.863.6332
Robert Stull, Director	
<b>Mathematics, Accountability, and Innovation</b> .....	616.863.6326
Maggie Thelen, Director	
<b>Media Services</b> .....	616.863.6377
Mindy McGinn, Director	
<b>Security</b> .....	616.863.6034
Vincent Reilly, Supervisor	
<b>Special Services</b> .....	616.863.6326
Mindy Duba, Director of Special Services	
Larinda Fase, Director of Special Programs	
<b>Transportation</b> .....	616.863.6328
Matt Puett, Director	

<b>Trustee</b> .....	Tricia Anderson
<b>Trustee</b> .....	Barbara Helms
<b>Trustee</b> .....	Andrea Jacobson

## SCHOOLS

<b>Parkside Early Childhood Center</b> .....	616.863.6360
Mindy McGinn, Principal	
Melissa Cochrill, Director	
<b>Belmont Elementary</b> .....	616.863.6362
Rachel DeKuiper, Principal	
<b>Cannonsburg Elementary</b> .....	616.863.6344
Teya Cotter, Principal	
<b>Crestwood Elementary</b> .....	616.863.6346
Kyle Avink, Principal	
<b>Edgerton Trails Elementary</b> .....	616.326.1030
Shannon Ouellette, Principal	
<b>Lakes Elementary</b> .....	616.863.6340
Matt Zokoe, Principal	
<b>Meadow Ridge Elementary</b> .....	616.863.6342
Blake Bowman, Principal	
<b>Roguewood Elementary</b> .....	616.863.6374
Amie Santillan, Principal	
<b>Valley View Elementary</b> .....	616.863.6366
Jeremy Karel, Principal	
<b>East Rockford Middle</b> .....	616.863.6140
Adam Burkholder, Principal	
Derek Dillon, Assistant Principal	
Jennifer Domagalski, Middle School Athletic Director	
<b>North Rockford Middle</b> .....	616.863.6300
Al Reickard, Principal	
Jesus Santillan, Assistant Principal	
Jennifer Domagalski, Middle School Athletic Director	
<b>RHS Freshman Center</b> .....	616.863.6348
Dr. Kelly Amshey, Principal	
Nick Davis, Assistant Principal	
<b>Rockford High School</b> .....	616.863.6030
Ricky Clark, Principal	
Eric Cavalli, Assistant Principal	
Chelsea Cates, Assistant Principal	
Darcy Seelye, Assistant Principal	
Cole Andrews, Athletic Director	
<b>River Valley Academy</b> .....	616.863.6324
Lisa Jacobs, Principal	
<b>Rockford Virtual</b> .....	616.863.6320
Jenny Thompson, Director	

The Rockford School District does not discriminate on the basis of race, color, national origin, sex, age, disability, religion, height, weight and marital status in its programs and activities. The following person has been designated to handle inquiries regarding the nondiscrimination policies: Korie Wilson-Crawford, Assistant Superintendent, Human Resources, Rockford Public Schools, 350 N. Main, Rockford, Michigan 49341, Telephone 616.863.6554.

# SCHOOL CLOSING INFORMATION

## SCHOOL CLOSINGS/DELAYS

The decision to close or delay school can be a tricky one. As a Michigan resident, you know how fickle our weather is. Just as weather systems can appear without warning, there are times when weather systems predicted to appear do not. Please keep in mind that a forecast is a prediction. Even skilled meteorologists will agree that not all watches, warnings, and advisories materialize as predicted.

School personnel carefully monitor weather forecasts and road conditions. The Rockford Public Schools district spans approximately 97 square miles. Therefore, weather and road conditions can be significantly different within our school district. Ultimately, the decision to close or delay school is made by the Superintendent of Schools, with every effort to make a decision by 5:30am.

In summary, weather is unpredictable and district staff does their best to make reasonable and practical decisions with the safety of students as their top priority. In addition, please keep in mind that weather conditions can rapidly improve or decline from the time a decision is made in the early hours of the morning to the time school is scheduled to start. If at any time you feel it is unsafe to send your child(ren) to school due to the weather or road conditions, you are encouraged to exercise your right to keep them home with an excused absence.

## EARLY DISMISSALS

Once students are in school, it is only in extreme cases the district would dismiss early due to weather, mainly due to the fact that many of our younger students could potentially go home to an empty house. However, in the rare case of an early dismissal, this will be posted on TV and the district website, and parents will be notified via the district's automated School Messenger system and/or the school phone tree.

Occasionally when road conditions deteriorate during the day, a decision is made to dismiss students up to one-half hour early to allow buses additional travel time so students arrive home at their regularly scheduled time. If you have any questions, please feel free to contact your school principal or the Superintendent's Office at 616.863.6557. To receive free text information about School Closings or Delays, just send a text message of "Y" or "Yes" to 67587.

***Morning closings and delays are posted on the district website and local TV/radio stations, with several stations offering notification options such as text or email alerts***

# FALL CALENDAR

## AUGUST

25: First Student Day  
29: Labor Day Weekend (no school)

## SEPTEMBER

1: Labor Day Weekend (no school)  
10: Early Release, 12:30 (Gr 6-12), 1:30 (Gr DK-5)  
24: Early Release, 12:30 (Gr 6-12), 1:30 (Gr DK-5)

## OCTOBER

15: Early Release, 12:30 (Gr 6-12), 1:30 (Gr DK-5)  
29: Early Release, 12:30 (Gr 6-12), 1:30 (Gr DK-5)

## BOARD MEETINGS

Check individual Board agenda for access to Board meetings; Board agenda posted on website no later than the Friday preceding the meeting.

# SENIOR CITIZENS

## 60 years of age or older

**We offer a Lifetime Golden Age Pass which entitles you to admission to school sponsored sporting events.**

***THIS PASS NEVER EXPIRES!***

***Stop by the Community Services office to get your free pass!***

**QUESTIONS? Call us at 616.863.6322**

Frequently Asked Questions About

FREE AND REDUCED-PRICE MEALS:

Dear Parent/Guardian:

Children need healthy meals to learn. Rockford Public Schools offers healthy meals every school day. This packet includes an application for free or reduced-price meal benefits, and a set of detailed instructions. Below are some common questions and answers to help you with the application process.

1. WHO CAN GET FREE OR REDUCED-PRICE MEALS?

- All children in households receiving benefits from the Food Assistance Program (FAP), Family Independence Program (FIP), or Food Distribution Program on Indian Reservations (FDPIR) are eligible for free meals.
- Foster children that are under the legal responsibility of a foster care agency or court are eligible for free meals.
- Children participating in their school's Head Start program are eligible for free meals.
- Children who meet the definition of homeless, runaway, or migrant are eligible for free meals.
- Children may receive free or reduced-price meals if your household's income is within the limits of the Federal Income Eligibility Guidelines. Your children may qualify for free or reduced-price meals if your household income falls at or below the limits on this chart.

FEDERAL ELIGIBILITY INCOME CHART FOR SCHOOL YEAR 2025-2026

Household Size	Annually	Monthly	Weekly
1	\$20,345	\$1,696	\$392
2	\$27,495	\$2,292	\$529
3	\$34,645	\$2,888	\$667
4	\$41,795	\$3,483	\$804
5	\$48,945	\$4,079	\$942
6	\$56,095	\$4,675	\$1,079
7	\$63,245	\$5,271	\$1,217
8	\$70,395	\$5,867	\$1,354
Each additional person:	\$7,150	\$596	\$138

2. HOW DO I KNOW IF MY CHILDREN QUALIFY AS HOMELESS, MIGRANT, OR RUNAWAY? Do the members of your household lack a permanent address? Are you staying together in a shelter, hotel, or other temporary housing arrangement? Does your family relocate on a seasonal basis? Are any children living with you who have chosen to leave their prior family or household? If you believe children in your household meet these descriptions and haven't been told your children will get free meals, please call or email Larinda Fase – lfase@rockfordschools.org.

3. DO I NEED TO FILL OUT AN APPLICATION FOR EACH CHILD? No. Use one Free and Reduced-Price School Meals Application for all students in your household. We cannot approve an application that is not complete, so be sure to fill out all required information. Applications can be filled out online at rockford.familyportal.cloud.

4. SHOULD I FILL OUT AN APPLICATION IF I RECEIVED A LETTER THIS SCHOOL YEAR SAYING MY CHILDREN ARE ALREADY APPROVED FOR FREE MEALS? No, but please read the letter you received carefully and follow the instructions. If any children in your household were missing from your eligibility notification, contact Jodie Fish - jfish@rockfordschools.org.

5. CAN I APPLY ONLINE? Yes! You are encouraged to complete an online application instead of a paper application if you are able. The online application has the same requirements and will ask you for the same information as the paper application. Visit rockford.familyportal.cloud to begin or to learn more about the online application process. Contact Jodie Fish – Jfish@rockfordschools.org if you have any questions about the online application.

6. MY CHILD'S APPLICATION WAS APPROVED LAST YEAR. DO I NEED TO FILL OUT A NEW ONE? Yes. Your child's application is only good for that school year and for the first few days of this school year, through October 7th, 2025. You must send in a new application unless the school told you that your child is eligible for the new school year. If you do not send in a new application that is approved by the school or you have not been notified that your child is eligible for free meals, your child will be charged the full price for meals.

7. I GET WIC. CAN MY CHILDREN GET FREE MEALS? Children in households participating in WIC may be eligible for free or reduced-price meals. Please fill out an online application.

8. WILL THE INFORMATION I GIVE BE CHECKED? Yes. We may also ask you to send written proof of the household income you report.

9. IF I DON'T QUALIFY NOW, MAY I APPLY LATER? Yes, you may apply at any time during the school year. For example, children with a parent or guardian who becomes unemployed may become eligible for free and reduced-price meals if the household income drops below the income limit.

10. WHAT IF I DISAGREE WITH THE SCHOOL'S DECISION ABOUT MY APPLICATION? You should talk to school officials. You also may ask for a hearing by calling or writing to: John Henry – 616.863.6037, jhenry@rockfordschools.org.

11. MAY I APPLY IF SOMEONE IN MY HOUSEHOLD IS NOT A U.S. CITIZEN? Yes. You, your children, or other household members do not have to be U.S. citizens to apply for free or reduced-price meals.

12. WHAT IF MY INCOME IS NOT ALWAYS THE SAME? List the amount that you normally receive. For example, if you normally make \$1000 each month, but you missed some work last month and only made \$900, put down that you made \$1000 per month. If you normally get overtime, include it, but do not include it if you only work overtime occasionally. If you have lost a job or had your hours or wages reduced, use your current income.

13. WHAT IF SOME HOUSEHOLD MEMBERS HAVE NO INCOME TO REPORT? Household members may not receive some types of income we ask you to report on the application, or may not receive income at all. Whenever this happens, please write a 0 in the field. However, if any income fields are left empty or blank, those will also be counted as zeroes. Please be careful when leaving income fields blank, as we will assume you meant to do so.

14. WE ARE IN THE MILITARY, DO WE REPORT OUR INCOME DIFFERENTLY? Your basic pay and cash bonuses must be reported as income. If you get any cash value allowances for off-base housing, food, or clothing, it must also be included as income. However, if your housing is part of the Military Housing Privatization Initiative, do not include your housing allowance as income. Any additional combat pay resulting from deployment is also excluded from income.

15. WHAT IF THERE ISN'T ENOUGH SPACE ON THE APPLICATION FOR MY FAMILY? List any additional household members on a separate piece of paper, and attach it to your application. Contact Jodie Fish to receive a second application.

16. MY FAMILY NEEDS MORE HELP. ARE THERE OTHER PROGRAMS WE MIGHT APPLY FOR? To find out how to apply for Food Assistance Program (FAP) or other assistance benefits, contact your local assistance office or call 1.855.275.6424.

If you have other questions or need help, call 616.863.6037.



# REF | ROCKFORD EDUCATION FOUNDATION



## SUPPORTING THE WHOLE CHILD AND EMPOWERING EDUCATORS

### GRANT DEADLINES 2025/26 SCHOOL YEAR

**SEPTEMBER 17, 2025**

**Fall Small Grant Deadline**  
up to \$1,000

**OCTOBER 13, 2025**

**Large Grant Deadline**  
up to \$15,000

**JANUARY 19, 2026**

**Winter Small Grant Deadline**  
up to \$1,000

**MARCH 16, 2026**

**Student Grant Deadline**  
up to \$500  
Must be student-written

The Rockford Education Foundation believes every Rockford student deserves the chance to reach their full potential. REF funds programs that support the whole child - academically, socially, and creatively - while giving educators the tools to bring great ideas to life.

From STEAM and literacy to music, student wellness, and college readiness, we invest in what kids need to grow, thrive, and succeed.

  Connect with REF

 616.863.6317

 [ref@rockfordschools.org](mailto:ref@rockfordschools.org)

[rockfordEDfoundation.org](http://rockfordEDfoundation.org)

# TRANSPORTATION MESSAGE

Dear Rockford Families,

We are diligently working on transportation routes for the upcoming school year and look forward to providing a safe and healthy environment for your students. Below are some updates for you.

## SAFETY PROTOCOLS

We will continue to do the following:

- Buses will be thoroughly cleaned and sanitized after morning routes.
- As best practice, students will not be allowed to eat or chew gum on the bus, unless there is a medical reason to do so.

## BUS REGISTRATION

Parents, in order to effectively plan our bus routes for the fall, we need your help. If your student will be riding the bus in the fall, please register them for a route. Registration will allow one route with the pick-up and drop-off points remaining the same. We understand this may create challenges for some families; however, this is necessary due to driver shortage. We appreciate your support and understanding of this procedure.

- Registrations received after route design (August 8) will be reviewed for availability of bus space. If there is no room on the route, there may be a delay in placing students on a route.
- Attendance will be taken on the routes. If a student has not ridden the bus for two weeks, we will remove your student from the route. This will allow us to provide transportation for students who may be waiting for a seat.
- You will be able to access your student's route information in Family Access starting August 18. Or you may utilize **My Ride K-12** for up-to-the-minute route changes.

## MY RIDE K-12

My Ride K-12 is a mobile app where you can access your student's secure data at the touch of a button. Access to real-time data helps your student to be at the right place at the right time.

- Stop location, assigned route, and scheduled pick-up time.
- GPS geolocation push notifications giving estimated time of bus arrival and information concerning bus status changes.
- Real time information concerning bus malfunction.
- Secure and confidential log in.
- Android/iOS app availability.
- Web version of My Ride K-12 availability.

Scan this QR code for the Parent User Guide explaining how to access and use your app.



We are making the app available for four users per student. If you do not want this information available for yourself nor anyone else, please contact transportation to have it disabled for your student. In order to “link” to your student you will need to know their ID number and last name. We trust this will be a helpful tool for you! Should you have any questions or concerns, please contact the transportation department at 616.863.6328.

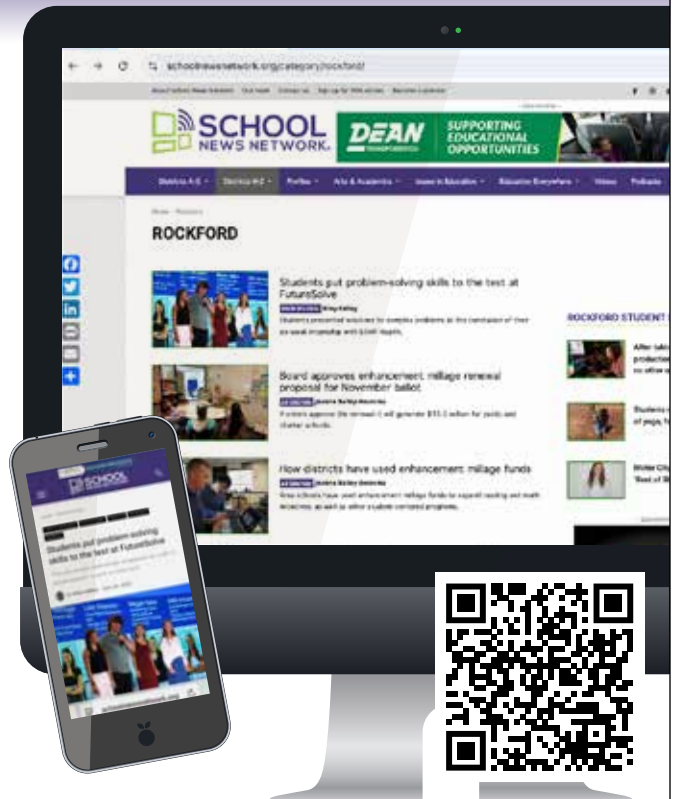
We look forward to seeing your children this fall, and we will continue to keep safety first as we encourage and support one another. Please feel free to reach out to the Transportation Department with any questions or concerns. Thank you.

Sincerely,

Matthew E. Puett  
Transportation Director

## Covering the stories and successes of Kent County's 20 public school districts.

School News Network reports on the 20 public school districts in Kent ISD, which enroll more than 102,000 students. Founded in 2013 as an initiative of Kent ISD, we are supported by local districts and community sponsors, and powered by an experienced team of reporters, editors and multimedia journalists. We specialize in covering classroom teaching and learning, analyzing the many issues facing students and highlighting the education magic that happens each day in our public schools.



## Well Minded Matters

**OUR FALL EDITION** of Well Minded Matters will spotlight the many dedicated helpers in our school district, including social workers, counselors, and mental health liaisons. These professionals provide essential support to our students, helping them navigate personal, social, and academic challenges. By addressing the whole child, they contribute directly to our children's well-being and academic success. This edition will highlight their impact, share their stories, and explain why their roles are indispensable to our district's mission.

**To read this fall edition simply scan the QR code!**



**Rockford Public Schools**  
Quality Community – Quality Schools  
*Together Building a Tradition of Excellence*





## Rockford Public Schools SUMMER CARE PROGRAM

What did the children do in our Summer BAC program? The question really should be what DIDN'T they do! This summer our amazing staff planned activities for gym, science, art and cooking while also taking the children on AMAZING field trips, such as a White Caps game, Rebounders, bowling, swimming at Blythefield, and the John Ball Zoo! They also hosted a talent show, a carnival and a huge summer picnic, and took many walking excursions around Rockford. Oh what a great summer it was!

**Special thank you to the Pump House, Herman's Boy, Blythefield Pool, Rockford Bowling Lanes and the Rockford Book Bus for partnering with us this summer!**



# ROCKFORD BOOK BUS

THANK YOU FOR ANOTHER GREAT SUMMER OF READING ADVENTURES!

## SUMMER 2025 STATS

### READING ROCKS:

- 402 VISITORS
- OVER 1,200 BOOKS BORROWED

### START OF SUMMER

#### PARADE:

- OVER 2,400 READING STICKERS WITH CANDY WERE HANDED OUT

### BOOK BUS STOPS:

- 140 DAILY STOPS
- 6 EVENING STOPS
- OVER 600 VISITORS A WEEK
- OVER 1,800 BOOKS WERE BORROWED EACH WEEK

## READING IS AN ADVENTURE!

### WEEKLY BOOK BUS THEMES:

- AT THE BEACH
- OUT OF THIS WORLD
- ON THE FARM
- UNDER THE SEA
- WINTER IN JULY
- AT THE ZOO
- PURE MICHIGAN



## FOLLOW US



Scan the QR code to visit our website OR follow us on Facebook at [facebook.com/RockfordBookBus](https://facebook.com/RockfordBookBus)

**REF** | ROCKFORD EDUCATION FOUNDATION

## THREE WAYS TO RETURN BOOKS

1. Return directly to the Book Bus next summer!
2. Return to an RPS Elementary School in August/September!
3. Return to the Dropbox at the Administration Building (350 N. Main) near the Community Services Door anytime!



## ADULT EDUCATION HIGH SCHOOL COMPLETION

### WANT TO EARN A ROCKFORD HIGH SCHOOL DIPLOMA OR PREPARE FOR THE GED?

Let us help you! Our dedicated teaching staff tailors instructional methods and curriculum options for each individual student. Students are given a clear plan and the help needed to achieve their goals.

Teachers are highly qualified in their teaching major and are aware of the unique needs of the adult education student. One-on-one time is given in each class.

Small class size, competent teachers, individualized learning plans, accelerated classes, online and onsite classes, a safe environment, a flexible class schedule, including day and evening classes, and a convenient location near US 131 and the E. Beltline are reasons students choose our FREE program.

### NOW ENROLLING FOR THE 2025/2026 SCHOOL YEAR

Please contact: Jenny Thompson  
Director Adult/Alternative Education Rockford Public Schools  
616.863.6324 | [jthompson@rockfordschools.org](mailto:jthompson@rockfordschools.org)

## SAVE THE DATE FINANCIAL AID NIGHT

**MONDAY, OCTOBER 6, 7:30PM**  
**RHS AUDITORIUM**

The Rockford High School Guidance Office is sponsoring a Financial Aid Night for parents and students on Monday, October 6 at 7:30pm. Juniors and Seniors and their parents will be guided through the process of filing for, and receiving financial assistance. A college financial aid representative will simplify the sometimes confusing process of filling out the free application for Federal Student Aid (FAFSA), applying for grants and scholarships, and certain low interest loans. The FAFSA is the cornerstone upon which all financial aid is based. This application considers both parent and student income in determining how much aid can be awarded. This meeting is relevant to students attending ANY college, and is not a solicitation for investments or services. Plan to attend this informative meeting!

## PESTICIDE ADVISORY TO ALL PARENTS

Dear Parent/Guardian:

Rockford Public Schools has adopted an Integrated Pest Management program. Inherent with this are the Rockford Schools efforts to reduce pesticide use as much as possible. While it may occasionally be necessary to apply a pesticide, this program does not rely on routine pesticide applications to resolve problems. We use various techniques such as habitat alteration, sanitation, mechanical means, exclusion, etc. to prevent pests from becoming a problem.

As required by Michigan law, you will receive advanced notice of non-emergency application of a pesticide (insecticide, fungicide, or herbicide), other than bait or gel formulation, which is made to the school, school grounds, or buildings. This advance notice of a pesticide application will be given 48 hours before the application by the following two methods:

- 1) Posting at the primary entrances to your child's school.  
The entrances that will be posted are the main entrance and those that have a sidewalk that leads directly to a parking lot.
- 2) Posting in the common area located by the main office of the school.

Please note that notification is not given for use of sanitizers, germicides, disinfectants or anti-microbial cleaners. In certain emergencies, such as an infestation of stinging insects, pesticides may be applied without prior notice to prevent injury to students, but you will be promptly notified following any such application via the two posting methods identified above.

You may review the school's Integrated Pest Management program and records of any pesticide application upon request by contacting Shawn Hayward, Director of Facilities and Operations at 616.863.6330 or emailing [operations@rockfordschools.org](mailto:operations@rockfordschools.org).

Parents or guardians of children attending the school are also entitled to receive the advance notice of a pesticide application, other than a bait or gel formulation, by first class United States mail postmarked at least 3 days before the application, if they so request. If you would like to be notified by mail please contact Shawn Hayward at the following number: 616.863.6330.

Please give the office your name, mailing address and what school(s) your child or children attend and they will put your name on the advance notification by US Mail list.

Sincerely,  
Shawn Hayward  
Director of Facilities and Operations

**Rockford**

# Preschool & Child Care

services

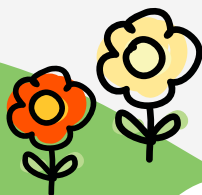


**There Are Many Different  
Preschool Opportunities  
Offered Through  
Rockford Preschool &  
Child Care Services.**

## **SPANISH PRESCHOOL**

**Rockford Community Services,  
350 N. Main Street**

A great first introduction to Spanish! In this program, preschoolers will be introduced to the Spanish language while using math, sensory, vocabulary, science and practical living materials. Spanish culture will also be explored through music, art, literature and movement.



## **Preschool Openings for 2025-26**

*There are still openings in the following programs:*

### **COMMUNITY EDUCATION PRESCHOOL**

- 3 year old T/TH from 8:15–10:15am, 10:30am–12:30pm  
Program costs: \$900 per year.
- 4 year old M-TH from 8:45–11:15am, 11:45am–2:15pm  
Program costs: \$1900 per year.

### **CHILD DEVELOPMENT LAB PRESCHOOL**

- 3 year old T/TH from 12:30–3:00pm
- 4 year old M/W/F from 12:30–3:00pm  
Program costs: \$1150-\$1700 per year.

### **COMMUNITY EDUCATION PRESCHOOL**

**Rockford Community Services, 350 N. Main Street**

This program helps children learn to work and play together in an enjoyable group setting that utilizes a developmentally appropriate curriculum. Our teachers make it a priority to make learning fun while providing plenty of individual attention and encouragement. Children are offered a variety of activities and experiences emphasizing a focus on environmental topics.

*To enroll in our Community Education Preschool,  
call our office at 616.863.6560*



**Child Care office 616.863.6560  
visit our website at [www.rockfordschools.org](http://www.rockfordschools.org)**

# Child Care and Preschool for Young Rams and School Age

## **CHILD DEVELOPMENT LAB PRESCHOOL**

*Rockford High School, 4100 Kroes*

This unique program, located at Rockford High School, teaches preschoolers to become successful learners through cooperative experiences, problem solving and play while simultaneously training high school students to become potential educators.

**To enroll in our Child Development Lab Preschool program, call our office at 616.863.6560**

## **FULL DAY PRESCHOOL**

*Parkside, 156 Lewis Street*

Our full day preschool is open year-round from 7:00am to 6:00pm. This is an ideal program for working parents who want the assurance that their child will be engaged in a variety of learning experiences in a planned preschool program, as well as rest and outdoor play.



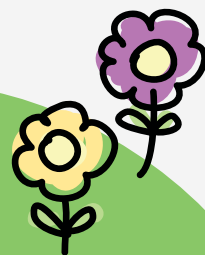
## **MONTESSORI**

*Rockford Community Services, 350 N. Main Street*

This program introduces children to practical living skills, sensory education, language, math, science and cultural activities, art, music and movement. A mix of ages is a key premise of the Montessori philosophy with 3-4 year olds attending together.



**For more information about any of our programs, call the Child Care office at 616.863.6560 or visit our website at [www.rockfordschools.org](http://www.rockfordschools.org)**



## **SCHOOL AGE BEFORE AND AFTER SCHOOL CARE**

Enroll now for before and after school care! BAC is offered at each elementary school from 7:00am until the start of school, after school until 6:00pm, and BAC is also offered on some school vacation days. Enrollment packets can be found online at [www.rockfordschools.org](http://www.rockfordschools.org), or call our office for more information at 616.863.6560.

**Registration Rate: \$40 per student**

**Morning BAC - \$10 per day Afternoon BAC - \$15 per day**

**Registrations will be considered based on availability.**



2025 - 2026

# SCHOOL CALENDAR

## AUGUST

25: First Student Day  
29: Labor Day Weekend (no school)

## SEPTEMBER

1: Labor Day Weekend (no school)  
10: Early Release, 12:30 (Gr 6-12), 1:30 (Gr DK-5)  
24: Early Release, 12:30 (Gr 6-12), 1:30 (Gr DK-5)

## OCTOBER

15: Early Release, 12:30 (Gr 6-12), 1:30 (Gr DK-5)  
29: Early Release, 12:30 (Gr 6-12), 1:30 (Gr DK-5)

## NOVEMBER

12: Early Release, 12:30 (Gr 6-12), 1:30 (Gr DK-5)  
26, 27, 28: Thanksgiving Break (no school)

## DECEMBER

10: Early Release, 12:30 (Gr 6-12), 1:30 (Gr DK-5)  
WINTER RECESS: December 22–January 2 (no school)

## JANUARY

5: School Resumes  
19: No School (Staff Personal Development)

## FEBRUARY

4: Early Release, 12:30 (Gr 6-12), 1:30 (Gr DK-5)  
13, 16: Mid-Winter Break (no school)  
25: Early Release, 12:30 (Gr 6-12), 1:30 (Gr DK-5)

## MARCH

11: Early Release, 12:30 (Gr 6-12), 1:30 (Gr DK-5)  
25: Early Release, 12:30 (Gr 6-12), 1:30 (Gr DK-5)

## APRIL

SPRING BREAK: April 2–April 10 (no school)  
13: School Resumes  
22: Early Release, 12:30 (Gr 6-12), 1:30 (Gr DK-5)

## MAY

6: Early Release, 12:30 (Gr 6-12), 1:30 (Gr DK-5)  
22, 25: Memorial Day Weekend (no school)

## JUNE

4, 5: Half Days, 10:55 (Gr 6-12), 11:55 (Gr DK-5)  
5: Last Day of School (Half Day)  
8-12: Reserved for make-up days



## EARLY RELEASE DAYS

September 10, 24	February 4, 25
October 15, 29	March 11, 25
November 12	April 22
December 10	May 6



## ROCKFORD EDUCATION FOUNDATION FALL SPONSORSHIP OPPORTUNITIES

Partner with REF to enrich education and help every Rockford student reach their full potential. Your donation funds programs that support the whole child and give educators the tools to bring great ideas to life.



### GAMEDAY SPONSOR DEADLINE AUGUST 26, 2025

Showcase your name or logo in front of thousands of fans at a Rockford Rams home football game! Game selection is first come, first served.



### RAM STATUE DEADLINE MAY 15, 2026

Celebrate your Ram Pride for generations to come by inscribing your name on a plaque on the Ram Statue at the Carlson-Munger Stadium.



### DONOR WALL DEADLINE MAY 15, 2026

Honor or memorialize someone special by sponsoring a plaque on the donor wall located in the Creative Teaching and Learning Center at Rockford High School.

616.863.6317  
ref@rockfordschools.org

Connect with REF  
rockfordEDfoundation.org



# New Student **ENROLLMENT**

## NOW OPEN for ALL STUDENTS

for the 2025-2026  
school year!

*Children who turn five on or before  
December 1, 2025 are eligible to enroll  
for the 2025-2026 school year.*



Please visit [www.rockfordschools.org/enrollment/](http://www.rockfordschools.org/enrollment/) to review the online enrollment procedures and required documentation.



**SCHOOLS OF CHOICE APPLICATIONS** are available  
to all students until the first day of school.

